

CDOT Updating InRoads Features



This document is a guide for updating Digital Terrain Model (DTM) feature styles and Transition Control names within InRoads. These changes are necessary due to new feature styles being developed and modifications or deletions to previous feature style names in CDOT Configuration Release 3.0. This is a complimentary guide to Chapter 2, Digital Terrain Models (DTMs) and Chapter 5, Typical Sections from the Roadway Design Using InRoads Manual.

Opening InRoads Files

1. Open MicroStation and InRoads
2. Load design DTM's that have been created prior to configuration release 3.0

Note:

- Existing topographic DTMs will not require this update.
- The version of the CDOT configuration can be determined by pausing the cursor over the CDOT logo located at the top-left corner of the main menu bar in MicroStation.

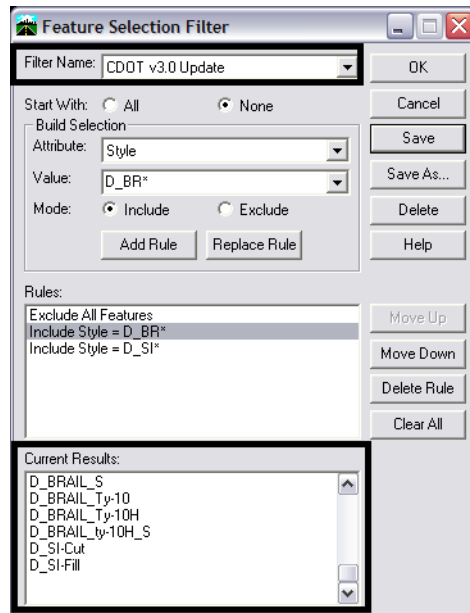


Terrain Models Feature Styles

DTM Evaluation

Determine if the design DTM contains features that require re-association to any new or modified Feature Styles. This can be accomplished by sorting the DTM features through the use of an InRoads feature filter. With feature filters a subset of the DTM features can be identified which lists only the features that require re-association

1. From the InRoads menu select Surface > Feature > Feature Selection Filter. The Feature Selection Filter dialog will appear.



2. Select the Feature Filter named **CDOT v3.0 Update** from the drop-down list. Any features displayed in the **Current Results** list box at the bottom of the dialog pass the *Rules* set in the filter and, subsequently, will need to be re-associated. If no features pass the filter, no further action is required and the Feature Selection Filter dialog can be closed.

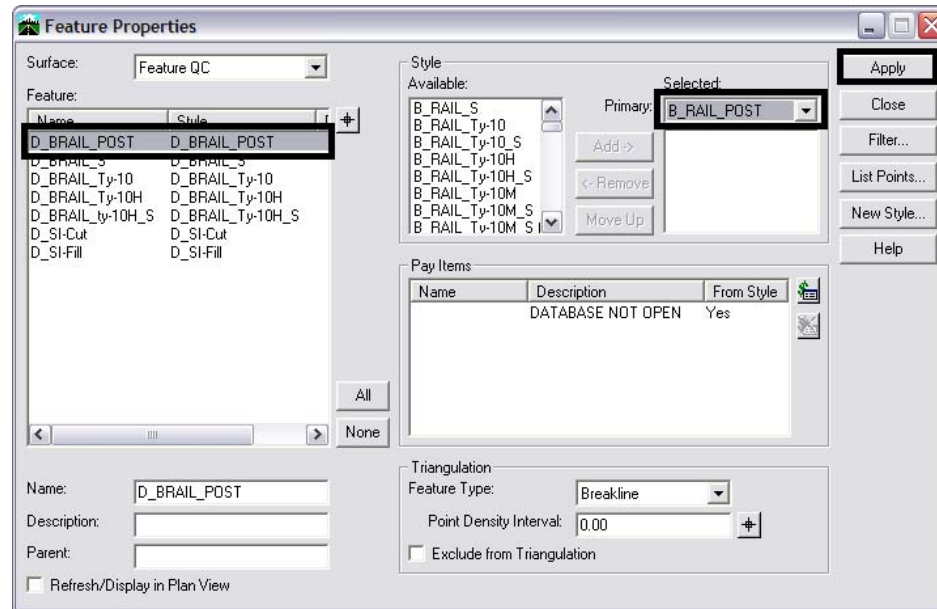
DTMs that require feature re-association

1. From the InRoads Locks toolbar select the Filter **CDOT v3.0 Update** from the drop-down list and toggle on the Feature Filter lock.



CDOT Update InRoads Features.pdf

2. From the InRoads menu select **Surface > Feature > Feature Properties**. The **Feature Properties** dialog will appear.
3. As was mentioned in step 4 above, if no names appear in the **Feature** list box, then nothing further needs to be done. There are no old Feature Styles in the DTM and therefore there is nothing that requires changing. If Features are listed, then complete the following steps.
4. Highlight the **Feature** name that requires re-association. In the example shown here, **D_BRAIL_POST** is the selected feature.



5. In the **Style** section of the dialog box, select an appropriate Feature Style from the drop-down list provided for **Selected:Primary**. **<D> Apply**. Once a new Feature Style has been selected for the Feature in question, the feature will no longer appear in the **Feature** list box, as it will no longer pass the active feature filter.
6. Continue updating other Feature Styles by repeating steps 8 and 9 until no features pass the filter.

Note: To expedite the update process, sort the features by style and select several features that have common styles in a single selection. Using this method, multiple features can have their Primary Feature Style updated in a single execution of the command. Remember to hold down the **<CTRL>** or **<SHIFT>** keys while selecting features.

7. Once all feature styles have been updated, close the **Feature Properties** dialog box and toggle the **Feature Filter** lock off.
8. **Save** the DTM Surface.

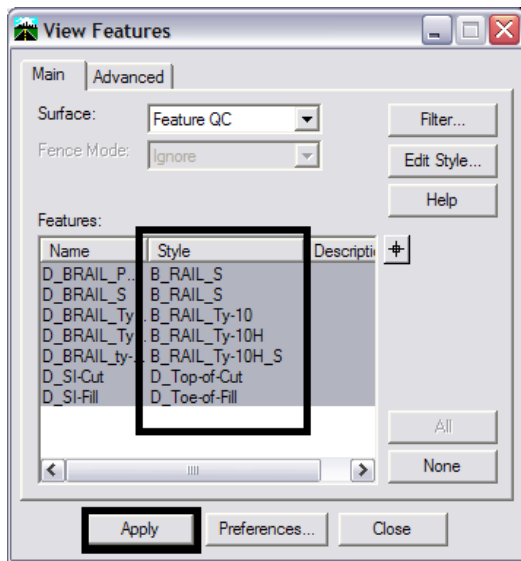
Updating graphics

DTM features that are currently displayed in a MicroStation file will require redisplay to refresh the graphic display based on the new feature properties.

1. Select the feature filter named **CDOT v3.0 Refresh** and toggle on the Feature Filter lock.



2. From the InRoads menu select Surface > View Surface > Features



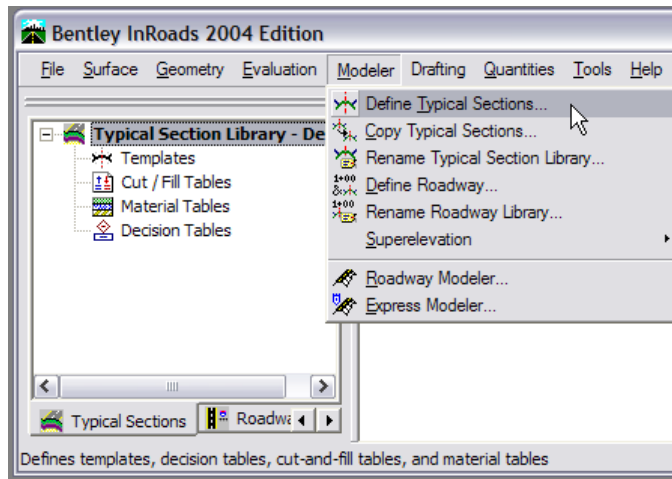
3. Highlight all, or only the features that require redisplay, from the **Feature** list box and <D> **Apply**. Both the DTM and graphics display should now be up to date with the current CDOT configuration.
4. Turn off the **Feature Filter** lock



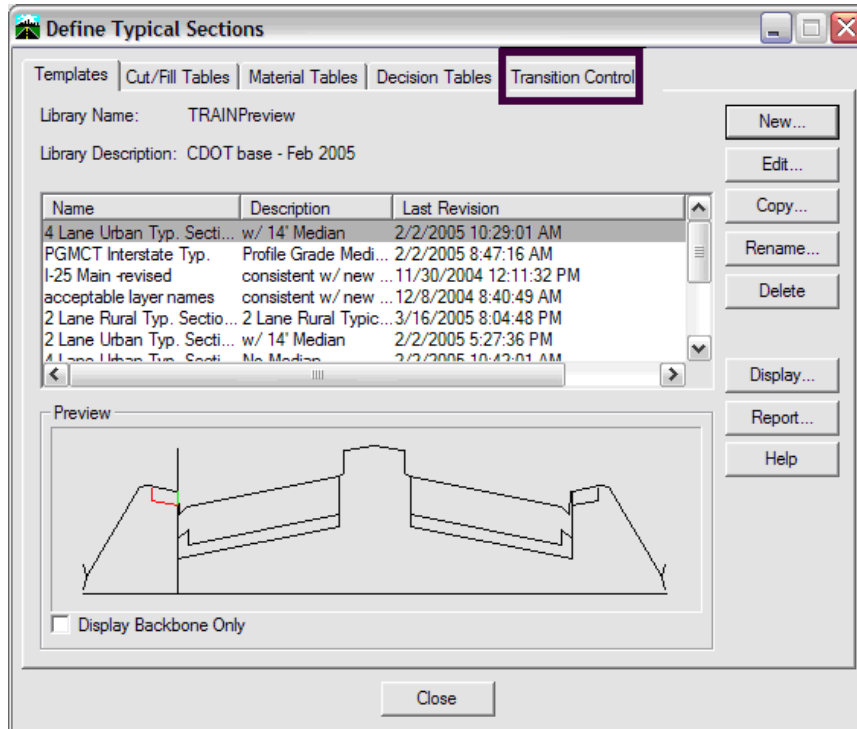
Updating Transition Control Name Feature Styles

The transition control names associated with templates may also require updating depending on the template library and templates being used. Transition control names refer to feature style names.

5. Once a template library has been loaded, Select **Modeler > Define Typical Sections**.

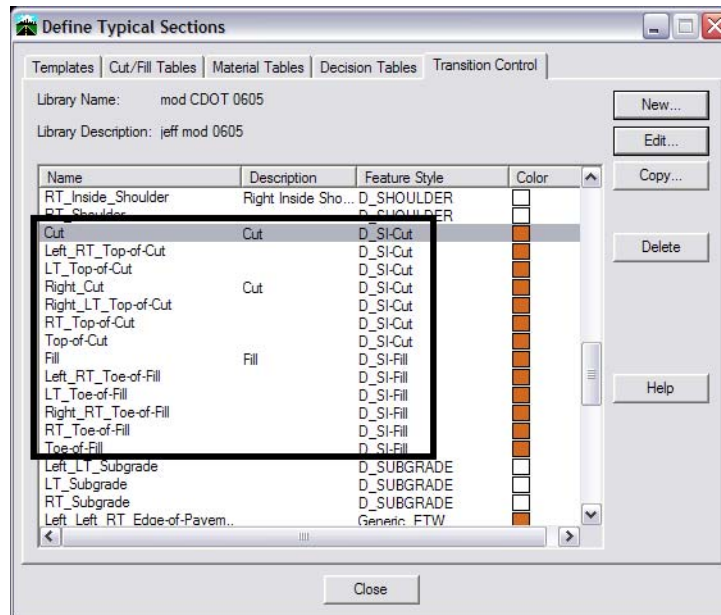


6. Select the *Transition Control* tab in the Define Typical Sections dialog box.



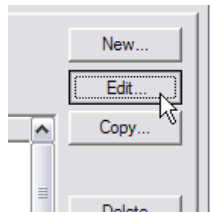
CDOT Update InRoads Features.pdf

7. Select the Transition Control **Name** for updating.

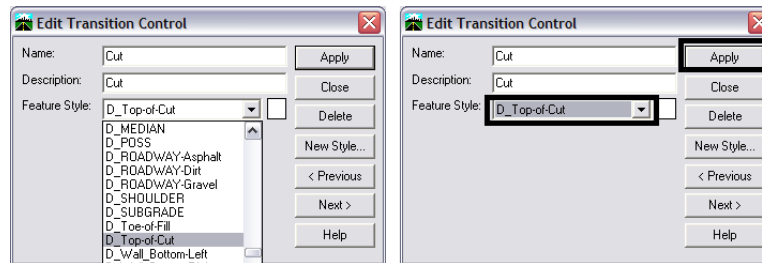


Note: You can sort the dialog by Feature Style, but are only allowed to edit one Transition Control Name at a time.

8. <D> Edit to edit the Transition Control.



9. Select the appropriate feature style for the selected transition control name from the drop-down list.



10. <D> Apply

11. Continue updating other Transition Control Feature Styles by repeating steps 19 through 22. Use the next and previous buttons on the **Edit Transition Control** dialog box to move through the Transition Control Names.

CDOT Update InRoads Features.pdf

Note: Once the transition controls have be updated, the Feature Style update will apply to all templates within the template library.

12. Once you have updated the feature styles associations for the transition controls, close the **Edit Transition Control** and **Define Typical Sections** dialog boxes.
13. **Save** the Typical Section Library.
14. Any future run of the **Roadway Modeler** will create *Digital Terrain Models* with the new InRoads Feature Styles.

Note: Transition Controls not updated will place graphics on the level named *default* and the symbology will be incorrect.